

Bob Carlos Clarke: Living Dolls



TOTAL CONTROL, 2004

41" x 70" giclee print

Edition of 9 (*only 3 left*)

£6,000 + frame + VAT = £8,340

also available as 24" x 34" print

Edition started by Bob Carlos Clarke



FOR DOLLS THAT DO DISHES, 2004

24" x 34" giclee print

Edition of 100

£1,400 + frame + VAT = £2,010

also available as 41" x 70" print

Edition started by Bob Carlos Clarke



ADULT FEMALES ATTACK WITHOUT PROVOCATION, 2004

24" x 34" giclee print

Edition of 100

£1,400 + frame + VAT = £2,010

41" x 70" print SOLD OUT

Edition started by Bob Carlos Clarke



FANTASY FEMALES ARE IMPOSSIBLE TO SATISFY, 2004

24" x 34" giclee print

Edition of 100

£1,400 + frame + VAT = £2,010

41" x 70" print SOLD OUT

Edition started by Bob Carlos Clarke



NOOKIA, 2004

24" x 34" giclee print

Edition of 100

£1,400 + frame + VAT = £2,010

also available as 41" x 70" print

Edition started by Bob Carlos Clarke

*Please note that prices are subject to change at the discretion of the gallery.
All enquiries: 020-7349 9332 / info@thelittleblackgallery.com*

Bob Carlos Clarke: Living Dolls



AUTOMATIC, 2004

24" x 34" giclee print

Edition of 100

£1,400 + frame + VAT = £2,010

also available as 41" x 70" print

and last signed print available:
8/100, 24" x 34", signed, £10,000
(one of only 8 prints ever signed)

Edition started by Bob Carlos Clarke



SEX KITTEN, 2004

34" x 24" giclee print

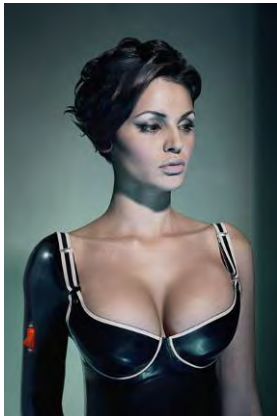
Edition of 100

£1,400 + frame + VAT = £2,010

also available as 70" x 41" print

and last signed print available:
8/100, 24" x 34", signed, £10,000
(one of only 8 prints ever signed)

Edition started by Bob Carlos Clarke



INFANTA ELECTRONICA, 2004

34" x 24" giclee print

Edition of 100

£1,400 + frame + VAT = £2,010

also available as 70" x 41" print

and last signed print available:
12/100, 24" x 34", signed, £10,000
(one of only 12 prints ever signed)

Edition started by Bob Carlos Clarke



CHOCOHOLIC, 2004

*24" x 34" giclee print
signed 9/100
(one of only 9 prints ever signed)*

£10,000 inc frame + VAT

also available as unsigned
24" x 34" and 41" x 70" print

Edition started by Bob Carlos Clarke

*Please note that prices are subject to change at the discretion of the gallery.
All enquiries: 020-7349 9332 / info@thelittleblackgallery.com*

Bob Carlos Clarke: Living Dolls



TEASE MAID, 2004

24" x 34" giclee print

Edition of 100

£1,400 + frame + VAT = £2,010

also available as 41" x 70" print

and last signed print available:
9/100, 24" x 34", signed, £10,000
(one of only 9 prints ever signed)

Edition started by Bob Carlos Clarke



NEVER RIDE NAKED, 2004

34" x 24" giclee print

signed 5/100

(only print ever signed from edition)

£10,000 inc frame + VAT

also available as unsigned
34" x 24" and 70" x 41" print

Edition started by Bob Carlos Clarke



DUTY KILLS, 2004

34" x 24" giclee print

Edition of 100

£1,400 + frame + VAT = £2,010

also available as 70" x 41" print

and last signed print available:
8/100, 34" x 24", signed, £10,000
(one of only 8 prints ever signed)

Edition started by Bob Carlos Clarke



LOVE DOLL, 2004

34" x 24" giclee print

Edition of 100

£1,400 + frame + VAT = £2,010

also available as 70" x 41" print

Edition started by Bob Carlos Clarke

*Please note that prices are subject to change at the discretion of the gallery.
All enquiries: 020-7349 9332 / info@thelittleblackgallery.com*

Bob Carlos Clarke: Living Dolls



DITA DOLL, 2005

34" x 24" giclee print

Edition of 100

£1,400 + frame + VAT = £2,010

also available as 70" x 41" print

Edition started by Bob Carlos Clarke



TITE STREET, 1990

41" x 70" giclee print

Edition of 9

£6,000 + frame + VAT = £8,340

also available as 24" x 34" print

Edition started by Bob Carlos Clarke



MISS X WAS NO ANGEL, 1990

34" x 24" giclee print

Edition of 100

£1,400 + frame + VAT = £2,010

also available as 70" x 41" print

and last signed print available:
6/100, 34" x 24", signed, £10,000
(one of only 6 prints ever signed)

Edition started by Bob Carlos Clarke



MASKED BLONDE, 1996

34" x 24" giclee print

signed 5/100

*(one of only two prints ever signed
from this edition)*

£12,000 (inc frame + VAT)

also available as unsigned
34" x 24" and 70" x 41" print

Edition started by Bob Carlos Clarke

*Please note that prices are subject to change at the discretion of the gallery.
All enquiries: 020-7349 9332 / info@thelittleblackgallery.com*

Bob Carlos Clarke: Living Dolls



SUNSET STRIP, 2004

24" x 34" giclee print
signed 1/100
*(only print ever signed from
this edition & image)*

£10,000 (inc frame + VAT)

also available as unsigned
24" x 34" and 41" x 70" print

Edition started by Bob Carlos Clarke
DREAM TEA, 2004

34" x 24" giclee print

Edition of 100

£1,400 + frame + VAT = £2,010

also available as 70" x 41" print

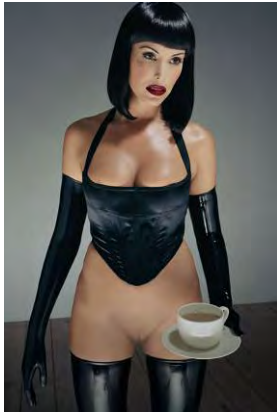
and last signed print available:
7/100, 34" x 24", signed, £10,000
(one of only 7 prints ever signed)

Edition started by Bob Carlos Clarke
TITE STREET, 1990

12" x 16" giclee print

Signed by Bob Carlos Clarke on front
(no edition exists in this size)

SOLD



GARDEN CHIC, 1994

16" x 12" silver gelatin handprinted &
handtoned, mounted on card &
enscribed by the photographer in
pencil with the model's name & notes
for reproduction

Unique

SOLD

* *This image is in the collection of the
National Media Museum*



Please note that prices are subject to change at the discretion of the gallery.
All enquiries: 020-7349 9332 / info@thelittleblackgallery.com

Bob Carlos Clarke: Living Dolls



AMANDA, 1990

24" x 20" silver gelatin handprinted & handtoned, tinted & reticulated

Unique

SOLD



AS YOU LIKE IT, 1997

20" x 24" inkjet print

Unique

SOLD



VANESSA-LEE, 1994

20" x 16" C-type print

Signed + numbered 6/150

£1,800 (*inc frame + VAT*)

** This image is in the collection of the National Media Museum*

Bob Carlos Clarke: Living Dolls



EMMA, 2000

10" x 8" C-type print

Test print

£1,400 (inc frame + VAT)

* This image is in the collection of the National Media Museum



LORRAINE, 1990

39" x 28" silver gelatin handprinted, handtoned with gold & bleached

Unique

£12,900 (inc frame + VAT)



BLACK IS MY TRUE LOVE'S HEART, 1984

24" x 20" silver gelatin handprinted, handtoned with selenium

Signed on front with title & signature

SOLD

* This image is in the collection of the National Media Museum

Please note that prices are subject to change at the discretion of the gallery.
All enquiries: 020-7349 9332 / info@thelittleblackgallery.com

Bob Carlos Clarke: Living Dolls



TWO DIVINE, 1986

Two 24" x 12" silver gelatin prints handprinted & handtoned & framed as diptych

Unique

£3,900 (inc frame + VAT)



STICKY FINGERS, 1990

16" x 12" silver gelatin handprinted & handtoned with selenium

Artist proof

£1,400 (inc frame + VAT)

** This image is in the collection of the National Media Museum*



KEEPING UP WITH THE JONESES, 1985

16" x 20" inkjet print

Artist proof

£1,400 (inc frame + VAT)

** This image is in the collection of the National Media Museum*

Bob Carlos Clarke: Living Dolls



KEITH RICHARDS, 1987

20" x 16" inkjet print

Artist proof

SOLD

** Images from this series are in the collections of the National Media Museum, National Portrait Gallery, and Rock and Roll Hall of Fame Museum*



PURRFECT, 2002

16" x 20" silver gelatin handprinted by the artist

Signed 5 /25
(only one other signed print exists in this edition + AP)

£10,000 (inc frame + VAT)



VANESSA LICKING, 1999

20" x 16" silver gelatin handprinted & gold toned by the artist

Signed 7 /25
(only one other signed print exists in this edition + AP)

£10,000 (inc frame + VAT)



SARAH KNEELING, 1996

16" x 20" silver gelatin handprinted by the artist

Signed 6 /25
(only one other signed print exists in this edition + AP)

£10,000 (inc frame + VAT)

*Please note that prices are subject to change at the discretion of the gallery.
All enquiries: 020-7349 9332 / info@thelittleblackgallery.com*

Bob Carlos Clarke: Living Dolls



TWISTED, 1998

*16" x 20" silver gelatin handprinted
by the artist*

Signed 2 /25
*(only one other signed print exists in
this edition + AP)*

SOLD



KISS, 1999

*16" x 20" silver gelatin handprinted
by the artist*

Signed 2 /25
*(only one other signed print exists in
this edition + AP)*

£10,000 *(inc frame + VAT)*



KADAMBA, 1998

*Silver gelatin handprinted
and toned by the artist*

A/P, unsigned, 24" x 20"

SOLD

(no edition exists of this image)



CRAB, 2002

*Silver gelatin handprinted and toned
by the artist*

A/P, unsigned, 24" x 20"

£2,900 *(inc frame + VAT)*

(no edition exists of this print)

*Please note that prices are subject to change at the discretion of the gallery.
All enquiries: 020-7349 9332 / info@thelittleblackgallery.com*

Bob Carlos Clarke: Living Dolls



EMMA UNDER LILIES, 1999

16" x 20" digital bromide print

Edition of 25

£350 + frame + VAT = £600

Edition started by the Estate of Bob Carlos Clarke



CRY BABY, 1995

16" x 20" digital bromide print

Edition of 25

£350 + frame + VAT = £600

Edition started by the Estate of Bob Carlos Clarke



FAITHFUL UNTO DEATH, 1984

20" x 16" digital bromide print

Edition of 25

£350 + frame + VAT = £600

Edition started by the Estate of Bob Carlos Clarke

also available as 34" x 24" giclee print



VANESSA LICKING, 1999

20" x 16" digital bromide print

Edition of 25

£350 + frame + VAT = £600

Edition started by the Estate of Bob Carlos Clarke

Bob Carlos Clarke: Living Dolls



RAFTRIDE, 1999

16" x 20" digital bromide print

Edition of 25

£350 + frame + VAT = £600

Edition started by the Estate of Bob Carlos Clarke



CITY GIRL, 2000

16" x 20" digital bromide print

Edition of 25

£350 + frame + VAT = £600

Edition started by the Estate of Bob Carlos Clarke



VICKY & VANESSA, 1999

20" x 16" digital bromide print

Edition of 25

£350 + frame + VAT = £600

Edition started by the Estate of Bob Carlos Clarke



LORRAINE, 1992

20" x 16" digital bromide print

Edition of 25

£350 + frame + VAT = £600

Edition started by the Estate of Bob Carlos Clarke

*Please note that prices are subject to change at the discretion of the gallery.
All enquiries: 020-7349 9332 / info@thelittleblackgallery.com*

Bob Carlos Clarke: Living Dolls



MASKED BLONDE, 1996

20" x 16" digital bromide print

Edition of 25

£350 + frame + VAT = £600

Edition started by the Estate of Bob Carlos Clarke

also available as 34" x 24" giclee print



MERMAID, 1985

16" x 20" digital bromide print

Edition of 25

£350 + frame + VAT = £600

Edition started by the Estate of Bob Carlos Clarke



BLACK IS MY TRUE LOVE'S HEART, 1984

20" x 16" digital bromide print

Edition of 25

£350 + frame + VAT = £600

Edition started by the Estate of Bob Carlos Clarke

also available as 34" x 24" giclee print



COURTESAN, 1985

20" x 16" digital bromide print

Edition of 25

£350 + frame + VAT = £600

Edition started by the Estate of Bob Carlos Clarke

Bob Carlos Clarke: Living Dolls



DREAMKEEPER, 1984

16" x 20" digital bromide print

Edition of 25

£350 + frame + VAT = £600

Edition started by the Estate of Bob Carlos Clarke

also available as 34" x 24" giclee print



INCENDIARY BLONDE, 1985

20" x 16" digital bromide print

Edition of 25

£350 + frame + VAT = £600

Edition started by the Estate of Bob Carlos Clarke



PAINT ME WITH WATER, 1985

16" x 20" digital bromide print

Edition of 25

£350 + frame + VAT = £600

Edition started by the Estate of Bob Carlos Clarke



SARAH KNEELING, 1999

16" x 20" digital bromide print

Edition of 25

£350 + frame + VAT = £600

Edition started by the Estate of Bob Carlos Clarke

*Please note that prices are subject to change at the discretion of the gallery.
All enquiries: 020-7349 9332 / info@thelittleblackgallery.com*

Bob Carlos Clarke: Living Dolls



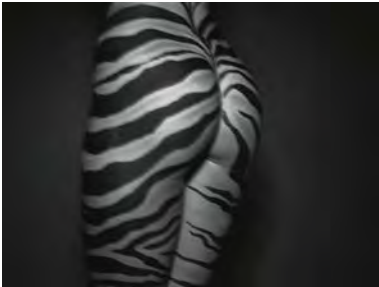
TWISTED, 1994

20" x 16" digital bromide print

Edition of 25

£350 + frame + VAT = £600

Edition started by the Estate of Bob Carlos Clarke



ZEBRA ARSE, 2000

16" x 20" digital bromide print

Edition of 25

£350 + frame + VAT = £600

Edition started by the Estate of Bob Carlos Clarke